



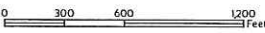
CITY OF HUMPHREY, NEBRASKA
 COMPREHENSIVE PLAN
 EXISTING LAND USE MAP
 FIGURE 10.4

Legend

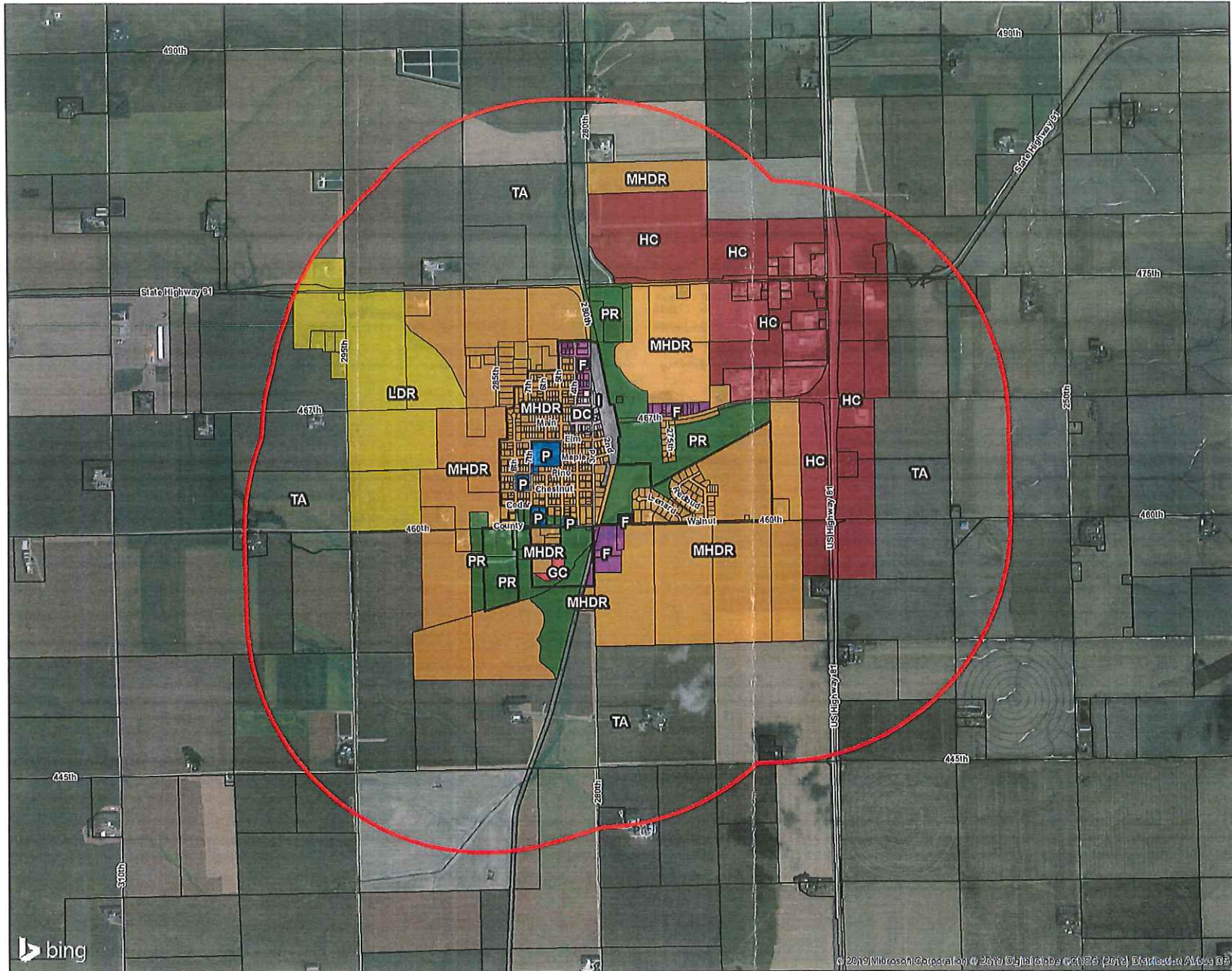
- Parcel
- City Limits
- 100-Year Floodplain
- Existing Land Use**
- Single-Family Residential
- Multi-Family Residential
- Mobile Home
- Commercial
- Public
- Quasi Public
- Parks & Recreation
- Industrial
- Vacant


MPC
 MARVIN PLANNING CONSULTANTS
Land Use & Planning, Surveying, and GIS Services

PROJECTION: NE State Plane (Ft.)
 DATUM: NAD 83
 DATE: 08.02.2018



 1" = 600 feet

DISCLAIMER: This Geographic Information Systems (GIS) and its components are designed as a source of reference for answering inquiries, for planning and for modeling. GIS is not intended, nor does it replace legal description information in the chain of title and other information contained in official government records such as the County Clerk and Records office or the courts. In addition, the representations of locations in this GIS cannot be substituted for actual legal surveys.



CITY OF HUMPHREY, NEBRASKA
COMPREHENSIVE PLAN
FUTURE LAND USE MAP
 FIGURE 10.5

Legend

- City Limits
- Extraterritorial Jurisdiction (1-mile)
- Parcel

Future Land Use

- Transitional Agriculture
- Low Density Residential
- Medium/High Density Residential
- Downtown Commercial
- General Commercial
- Highway Commercial
- Flex
- Public / Quasi Public
- Parks & Recreation
- Industrial

MPC
 MAHWIN PLANNING CONSULTANTS
Specializing in Municipal, County and Regional Planning

PROJECTION: NE State Plane (Ft.)
 DATUM: NAD 83
 DATE: 03.11.2019

0 1000 2000 4000 Feet
 1" = 2,000 Feet

DISCLAIMER: This Geographic Information Systems (GIS) and its components are designed as a source of reference for answering inquiries, for planning and for modeling. GIS is not intended, nor does it replace legal description information in the chain of title and other information contained in official government records such as the County Clerk and Records office or the courts. In addition, the representations of locations in this GIS cannot be substituted for actual legal surveys.